
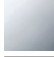



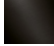


13 801 845



- 210mm projection
- circular normal flow
- hole diameter 37 mm
- 1/2" connection
- plug-link mounting
- max. flow 21.5 l/min at 3 bar flow pressure
- WRAS 2207003

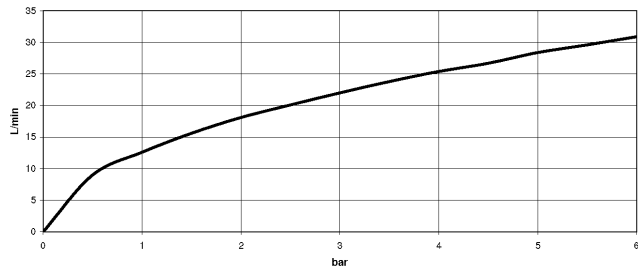
	Brushed Chrome	13 801 845-93
	Chrome	13 801 845-00
	Brushed Platinum	13 801 845-06
	Dark Chrome	13 801 845-19
	Matte Black	13 801 845-33
	Brushed Dark Platinum	13 801 845-99

13 801 845

mm [inches]



Flow rate chart

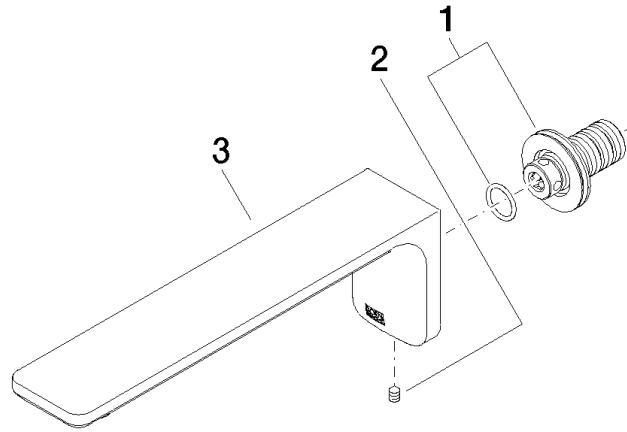


Certificates

IAPMO_4976 (2). LGA_29012. WRAS_2207003.

13 801 845

Parts for other finishes can be found here: [Chrome](#)



Spare parts list

No.	Item Number	Name	Quantity used	Delivery time
1	90 24 03 108 00 90	nipple set	1	2
2	90 31 11 004 00 90	pin	1	2
3	90 11 84 014 02-93	spout	1	20